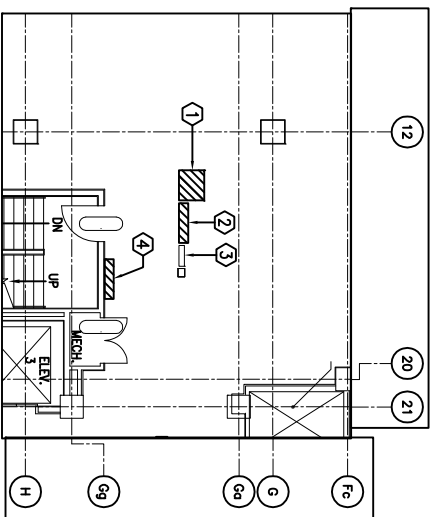
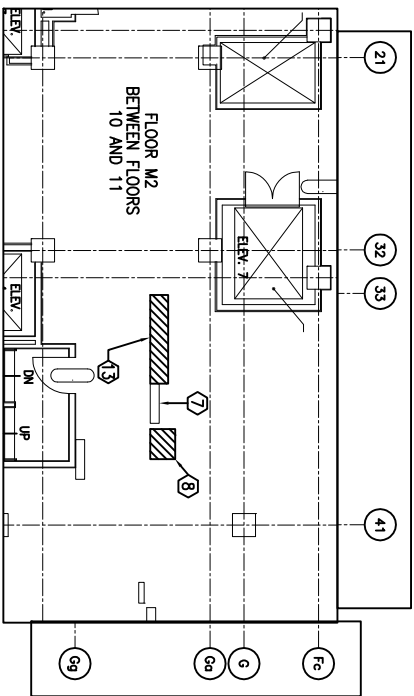


SCALE: NONE



SCALE: NONE



SCALE: NONE

NOTE: UNLESS OTHERWISE CALLED OUT ON DRAWINGS AND/OR REQUIRED PER NEC CODE, CONTRACTOR MUST FIELD VERIFY EXISTING TRANSFORMERS, PANELS, MCC, STARTERS AND CABLES AND MATCH THE NEW ITEMS FOR THEIR TYPE, CAPACITY, SIZE, ETC.

**U.S. General Services Administration
Mid-Atlantic Region
Public Buildings Service
The Strawbridge Building
20 North 8th Street
Philadelphia, PA 19107-3191**

U.S. International Services Ltd.

113 Kresson-Edinboro Rd.
Voorhees, NJ 08043

Engineers & Constructors
Phone: (856) 346-0747
Fax: (856) 346-9529
USISLTD.COM

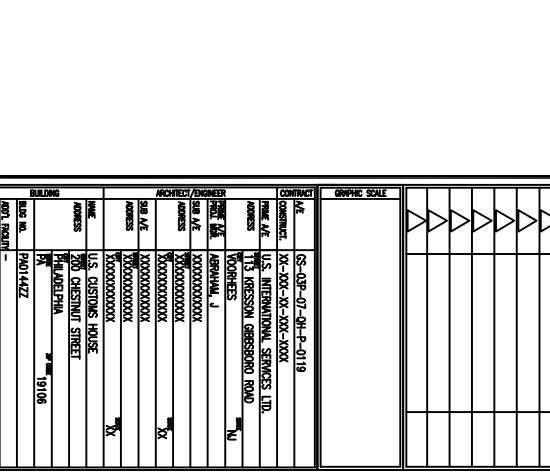
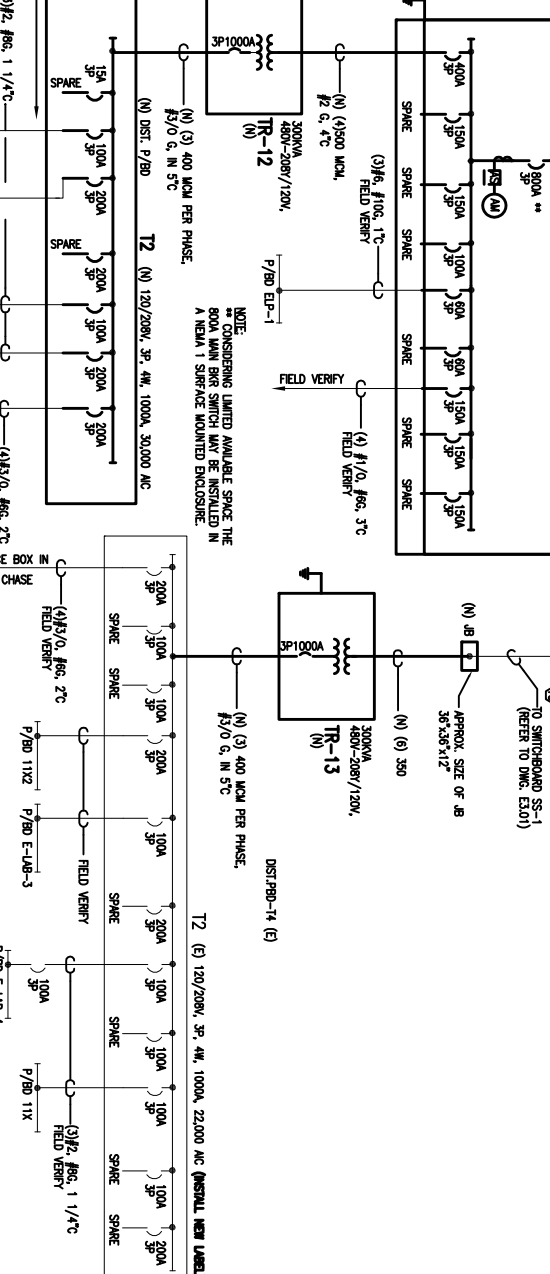
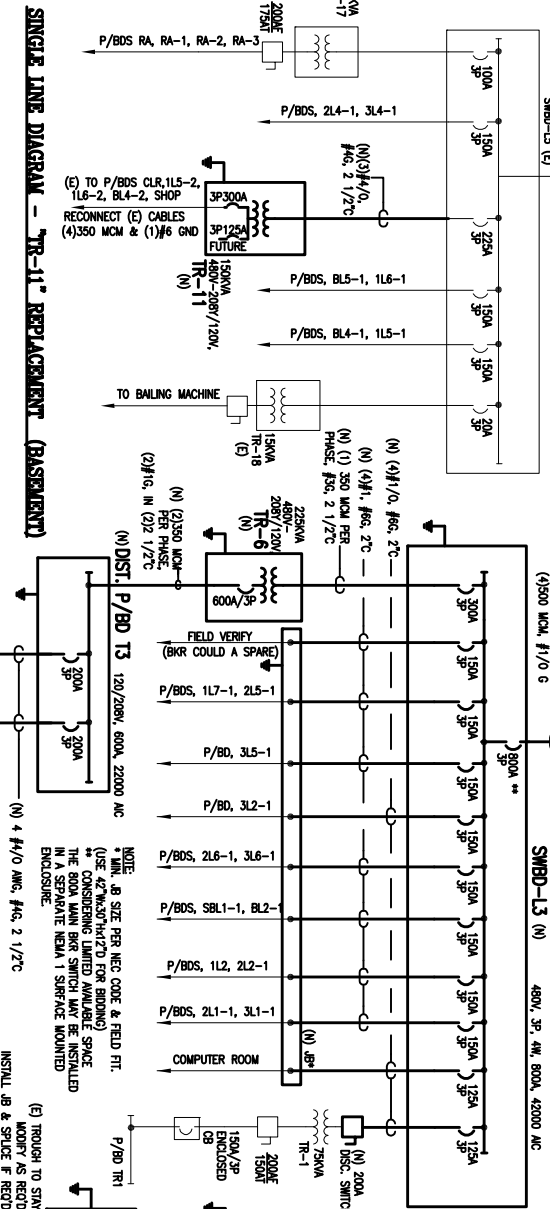
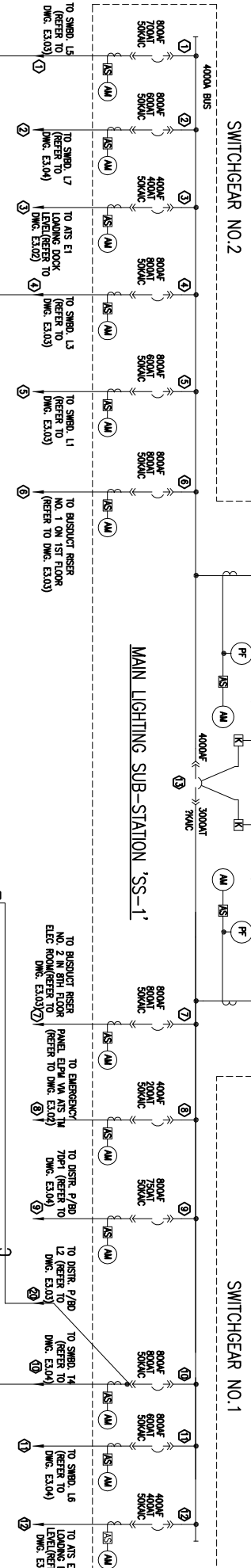
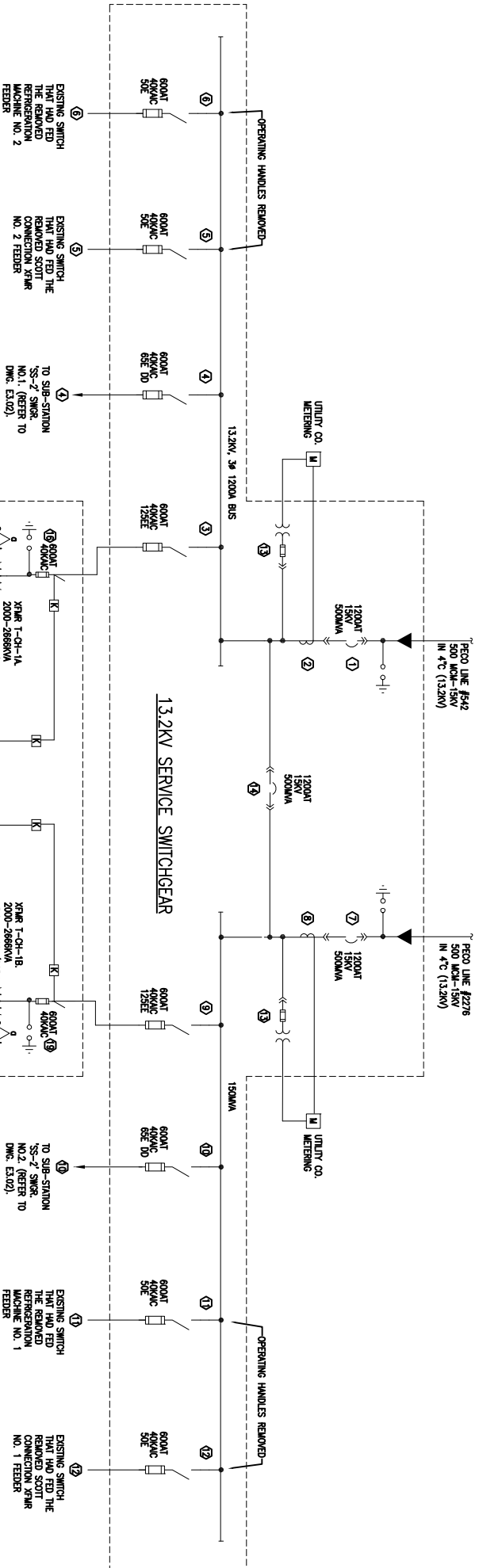


U.S. General Services Administration
Mid-Atlantic Region
Public Buildings Service
The Strawbridge Building
20 North 8th Street
Philadelphia, PA 19107-3191

U.S. CUSTOMS HOUSE,
PHILADELPHIA
ELECTRICAL DISTRIBUTION
SYSTEM—UPGRADE, MCC,
TRANSFORMERS, & PANEL
REPLACEMENT PROJECT
DESIGN PHASE ISSUE 100%

BID DOCUMENT ISSUE: 08/27/08

- NOTES:
- CONTRACTOR SHALL MATCH EXISTING WIRE SIZES, QUANTITY, AND TYPES TO THE FULLEST EXTENT POSSIBLE WHEN SPICES ARE REQUIRED.
 - CONTRACTOR SHALL FIRST TEST FOR GROUNDS AND SHORTS ON ALL EXISTING TO REMAINING WIRES BEFORE STRIPPING.
 - USE THE FOLLOWING WIRE AND CONDUIT SIZES AS MINIMUM, UNLESS OTHERWISE UNDER SIZES ARE SPECIFIED ON THE DWGS.
- 20K (3) #12 AWG, #12G, 3/4" TC
 - 30K (3) #10 AWG, #10G, 3/4" TC
 - 60K (3) #8 AWG, #8G, 1" TC
 - 70K (3) #4 AWG, #4G, 1" TC
 - 100K (3) #2 AWG, #2G, 1 1/4" TC
 - 200K (4) #3/0 AWG, #3G, 2" TC
 - 300K (4) #250 MCM, #2G, 3" TC
 - 400K (4) #500 MCM, #4G, 3" TC
 - 800K (2) 3" TC W/ (6) #500 MCM/41/06 EA
 - 1000K (2) 3" TC W/ (6) #500 MCM/42/06 EA
 - 1200K (3) 3" TC W/ (6) #500 MCM/43/06 EA
- D) CONTRACTOR AND VENDOR TO FIELD VERIFY DIMENSIONS, FIELD CONSTRAINTS AND AVAILABLE SPACES FOR SELECTION, FABRICATION AND INSTALLATION OF XWMS, PANELS, MCC, AND JB. FIELD FIT INSTALLATION AS NEEDED.
- E) CONTRACTOR SHALL FIELD VERIFY SECONDARY VOLTAGES OF ALL 277V SECONDARY FEEDERS MAY BE ADJUSTED TO ADJACENT PANEL WHEN NECESSARY DUE TO SPACE LIMITATION AFTER OBTAINING GSA APPROVAL.
- G) JB SIZES SHOWN ARE APPROXIMATE MINIMUM SIZE. ACTUAL SIZE BY FIELD AS PER NEC CODE.
- H) INSTANT SERVICES AS REQUIRED TO COMPLETE THE PROJECT.
- I) UNLESS OTHERWISE SPECIFIED, ALL FIELD WIRING SHALL BE REQUIRED TO BE CONDUCTED IN ACCORDANCE WITH THE FOLLOWING: CONDUIT, TRANSFORMERS, PANELS, MCC, SWITCHES, AND CABLES AND MATCH THE NEW ITEMS FOR THEIR TYPE, CAPACITY, SIZE, ETC.



SINGLE LINE DIAGRAM - TR-6, TR-7 & TR-8 REPLACEMENT (NEAR SUB-BASEMENT)

SINGLE LINE DIAGRAM - TR-12 & TR-13 REPLACEMENT (UPPER LOFT)

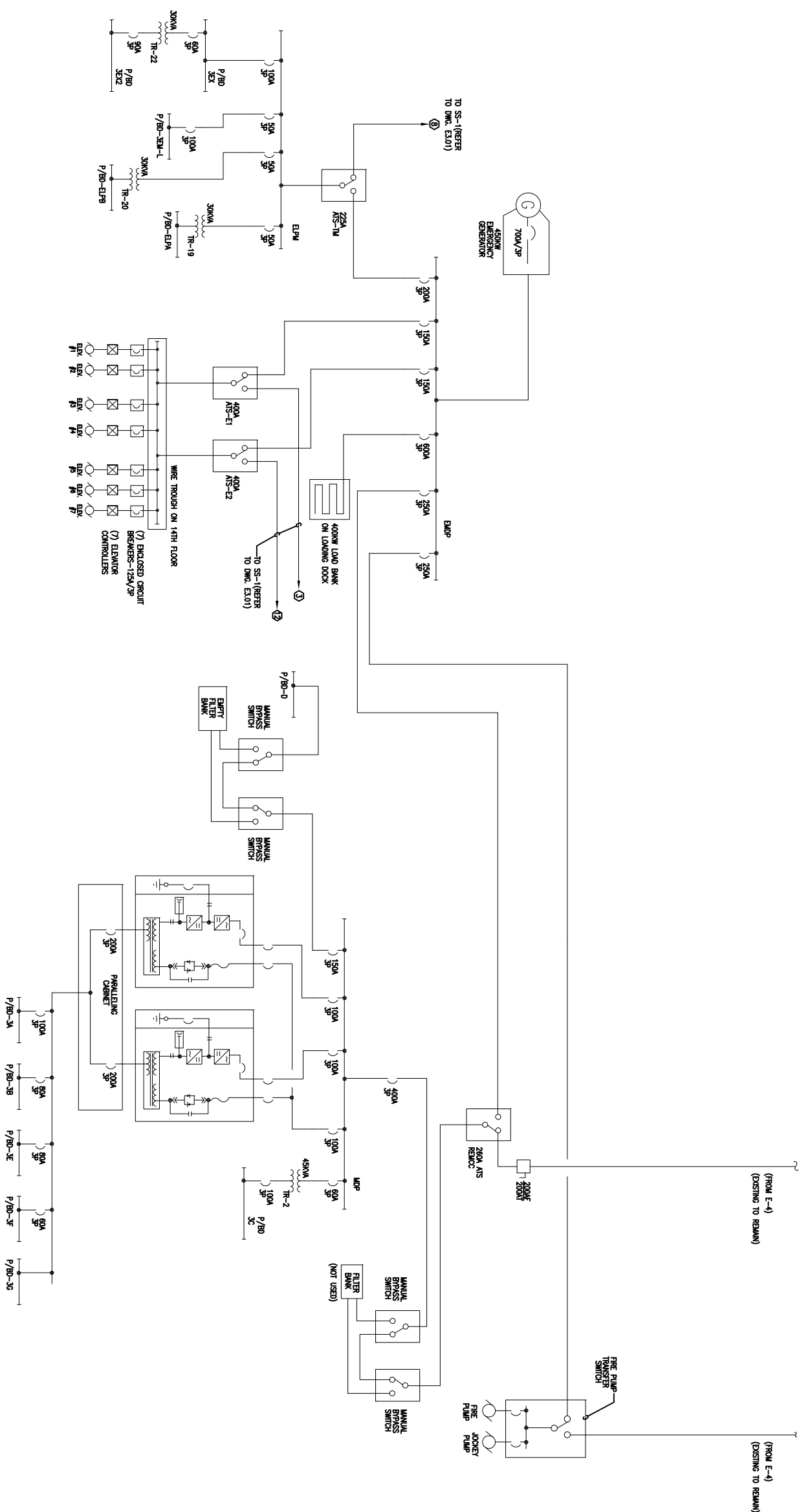
U.S. International Services Ltd.
113 Kessner-Gibbsboro Rd.
Voorhees, NJ 08043
USIS1710000
USIS1710000

Engineers & Constructors
Phone: (850) 346-6527
Fax: (850) 346-6529
USIS1710000

EP	6	03
DESIGN	SHEET	NO.

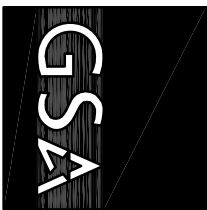
U.S. General Services Administration
Mid-Atlantic Region
Public Buildings Service
The Strawbridge Building
20 North 8th Street
Philadelphia, PA 19107-3191

U.S. CUSTOMS HOUSE,
PHILADELPHIA
ELECTRICAL DISTRIBUTION
SYSTEM-UPGRADE; MCC,
TRANSFORMERS, & PANEL
REPLACEMENT PROJECT
DESIGN PHASE ISSUE 100%
BID DOCUMENT ISSUE: 08/27/08

[illegible]

THIS DWG E-6 IS FOR REFERENCE ONLY

PROPERTY OF THE UNITED STATES GOVERNMENT - FOR OFFICIAL USE ONLY. Do not remove this notice. Properly destroy documents when no longer needed



U.S. GENERAL SERVICES ADMINISTRATION

PUBLIC BUILDINGS SERVICE
MID-ATLANTIC REGION

MCC, TRANSFORMERS, & PANEL REPLACEMENT

U.S. CUSTOMS HOUSE
200 CHESTNUT STREET
PHILADELPHIA, PA
PROJECT No. RPA-00153

PROJECT DWGS: 100% DESIGN PHASE ISSUE (BID DOCUMENT ISSUE

SHEET No.	DWG. No.	GENERAL TITLE
1	G-0-01	COVER SHEET
2	EP-0-02	ABBREVIATIONS AND NOTES
3	EP-0-03	SINGLE LINE DIAGRAM 1 OF 3
4	EP-0-04	SINGLE LINE DIAGRAM 2 OF 3
5	EP-6-05	PANEL & MCC FRONT VIEWS
6	EP-6-06	SINGLE LINE DIAGRAM 3 OF 3 (FOR REF. ONLY
7	EP-1-07	BASEMENT AREA PLAN
8	EP-1-08	UPPER LOFT PLAN

**U.S. General Services Administration
Mid-Atlantic Region
Public Buildings Service
The Strawbridge Building
20 North 8th Street
Philadelphia, PA 19107-3191**

U.S. CUSTOMS HOUSE,
PHILADELPHIA
ELECTRICAL DISTRIBUTION
SYSTEM-UPGRADE; MCC,
TRANSFORMERS, & PANEL
REPLACEMENT PROJECT
DESIGN PHASE ISSUE 100%
BID DOCUMENT ISSUE; 08/27/08

[illegible]